

POWER SUPPLY

- VARIAC
- AC POWER SUPPLY
- DC POWER SUPPLY
- AC & DC POWER SUPPLY
- SWITCHING POWER SUPPLY
- PROGRAMMABLE DC POWER SUPPLY

M10-AD370



Features

- .AC and DC combined power supply
- .DC constant voltage and constant current
- .AC output current limited and continuously adjusting
- .AC output over load electronic protection

Specifications

DC output

- .Output voltage: 0~30V
- .Output current: 0~6A
- .Line regulation: CV $1 \times 10^{-4} + 3\text{mV}$ CC $2 \times 10^{-3} + 3\text{mA}$
- .Load regulation: CV $1 \times 10^{-4} + 5\text{mV}$ CC $2 \times 10^{-3} + 5\text{mA}$
- .Ripple & Noise: CV 1mVrms CC 3mArms
- .Display accuracy: Voltmeter $\pm(0.2\%Rdg+2\text{digits})$
Ammeter $\pm(1.0\%Rdg+2\text{digits})$

AC output

- .Output voltage: 0~30V
- .Output current: 0~6A
- .Display accuracy: Voltmeter $\pm(1.0\%Rdg+2\text{digits})$
Ammeter $\pm(1.0\%Rdg+2\text{digits})$
- .Input voltage: 220~240VAC $\pm 10\%$, 50Hz or 110~127VAC $\pm 10\%$, 60Hz
- .Dimensions: 380(W) \times 140(H) \times 300(D)mm
- .Weight: 12kg



M10-AD370

M10-AD22 SERIES



Features

- .AC and DC combined power supply
- .DC constant voltage and constant current
- .AC output over load protection
- .19-inch rack mount (3U) and benchtop
- .Output from front panel and rear panel
- .Temperature controlled fan

Specifications

DC output

- .Line regulation: CV $1 \times 10^{-4} + 3\text{mV}$ CC $2 \times 10^{-3} + 3\text{mA}$
Fixed output 10mV
- .Load regulation: CV $1 \times 10^{-4} + 5\text{mV}$ CC $2 \times 10^{-3} + 5\text{mA}$
Fixed output 10mV
- .Ripple & Noise: CV 1mVrms CC 3mArms
Fixed output 10mV
- .Fixed output accuracy: 2.5%
- .Display accuracy: Voltmeter $\pm(0.2\%Rdg+2\text{digits})$
Ammeter $\pm(1.0\%Rdg+2\text{digits})$

AC output

- .Display accuracy: Voltmeter $\pm(1.0\%Rdg+2\text{digits})$
Ammeter $\pm(1.0\%Rdg+2\text{digits})$
- .Input voltage: 110~127VAC $\pm 10\%$, 220~240VAC $\pm 10\%$ Switchable



M10-AD2210

Model	DC Output Voltage	DC Output Current	AC Output Voltage	AC Output Current	Size	Weight (kg)
M10-AD2205	0~30V,5V	0~5A,3A	0~250V	2.5A	19" 3U	14
M10-AD2210	0~30V,5V	0~5A,3A	0~250V	4.5A	19" 3U	16

M10-AD3030 SERIES

Features

- .AC and DC combined power supply
- .DC constant voltage and constant current
- .AC output over load protection
- .19-inch rack mount (3U) and benchtop
- .Temperature controlled fan

Specifications

DC output

- .Line regulation: CV $6 \times 10^{-4} + 3\text{mV}$ CC $2 \times 10^{-3} + 3\text{mA}$
- .Load regulation: CV $3 \times 10^{-3} + 5\text{mV}$ CC $2 \times 10^{-3} + 5\text{mA}$
- .Ripple & Noise: CV 50mVrms CC 50mArms
- .Display accuracy: Voltmeter $\pm(1.0\% \text{Rdg} + 2\text{digits})$
Ammeter $\pm(1.0\% \text{Rdg} + 2\text{digits})$

AC output

- .Display accuracy: Voltmeter $\pm(1.0\% \text{Rdg} + 2\text{digits})$
Ammeter $\pm(1.0\% \text{Rdg} + 2\text{digits})$
- .Input voltage: 110~127VAC $\pm 10\%$, 220~240VAC $\pm 10\%$ Switchable
- .Dimensions: 19" 3U
- .Weight: 22kg

Model	DC Output Voltage	DC Output Current	AC Output Voltage	AC Output Current
M10-AD3030	0-30V	0-30A	0-30V	0-30A
M10-AD3030W	0-30V	0-30A	I 0-30V	I 0-30A
			II 0-250V	II 0-4A



M10-AD3030W



M10-AD3030

SINGLE OUTPUT ADJUSTABLE DC POWER SUPPLY

M10-QS SERIES

Features

- . 16 hours continuously output with full load
- . Over voltage protection
- . Voltage and current preset function
- . USB power output (5V/2A)
- . Constant voltage and constant current
- . Low ripple and noise
- . CV/CC auto switching
- . 3 digits LED display (4 digits LED display is optional)



M10-QS3010

Specifications

- .Line regulation: CV $\leq 5 \times 10^{-4} + 3\text{mV}$ (M10-QS30XX, M10-QS60XX) $\leq 1 \times 10^{-4} + 3\text{mV}$ (Other models)
 CC $\leq 4 \times 10^{-3} + 3\text{mA}$ (M10-QS30XX, M10-QS60XX) $\leq 2 \times 10^{-3} + 3\text{mA}$ (Other models)
- .Load regulation: M10-QS30XX, M10-QS60XX :
 CV $\leq 5 \times 10^{-4} + 3\text{mV}$ (output current $\leq 10\text{A}$) $\leq 1 \times 10^{-3} + 3\text{mV}$ (output current $> 10\text{A}$)
 CC $\leq 4 \times 10^{-3} + 3\text{mA}$
 Other models :
 CV $\leq 1 \times 10^{-4} + 3\text{mV}$ (output current $\leq 3\text{A}$) $\leq 2 \times 10^{-4} + 3\text{mV}$ ($3\text{A} \leq$ output current $< 10\text{A}$)
 CC $\leq 1 \times 10^{-3} + 3\text{mA}$ (output current $\leq 3\text{A}$) $\leq 2 \times 10^{-3} + 3\text{mA}$ ($3\text{A} \leq$ output current $< 10\text{A}$)
- .Ripple & noise: CV 1.5mVrms CC 3mArms
- .Display accuracy: $\pm (0.5\% \text{Rdg} + 2\text{digits})$
- .Input voltage: 110~127VAC $\pm 10\%$ 60Hz, 220~240 $\pm 10\%$ 50Hz Switchable

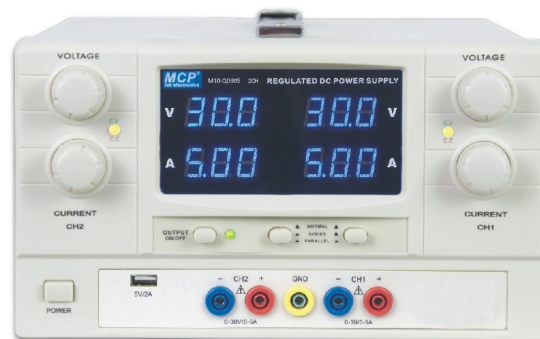
Model	Voltage	Current	Dimensions (W×H×D)	Weight (kg)
M10-QS3010	0~30V	0~10A	255×155×320 mm	9
M10-QS3020	0~30V	0~20A	255×155×320 mm	9
M10-QS605	0~60V	0~5A	255×155×320 mm	11.5
M10-QS6010	0~60V	0~10A	255×155×320 mm	15
M10-QS1003	0~100V	0~3A	255×155×320 mm	9
M10-QS1005	0~100V	0~5A	255×155×320 mm	14
M10-QS2001	0~200V	0~1A	255×155×320 mm	7
M10-QS2003	0~200V	0~3A	255×155×320 mm	15
M10-QS3030	0~30V	0~30A	255×155×480 mm	18
M10-QS6020	0~60V	0~20A	255×155×480 mm	20
M10-QS2005	0~200V	0~5A	255×155×480 mm	18

DUAL OUTPUT ADJUSTABLE DC POWER SUPPLY

M10-QD SERIES

Features

- . Output off function
- . Voltage preset function
- . Dual independent adjustable DC outputs
- . USB power output (5V/2A)
- . Independent, series and parallel variety output
- . Constant voltage and constant current
- . Low ripple and noise
- . Four LED displays with 3 digits, selectable for two sets output voltage and current display simultaneously
- . 16 hours continuous output with full load
- . Auto tracking output



M10-QD3010

Specifications

- .Line regulation: CV $\leq 5 \times 10^{-4} + 3\text{mV}$
CC $\leq 4 \times 10^{-3} + 3\text{mA}$
- .Load regulation: CV $\leq 5 \times 10^{-4} + 3\text{mV}$ (output current $\leq 10\text{A}$) $\leq 1 \times 10^{-3} + 3\text{mV}$ (output current $> 10\text{A}$)
CC $\leq 4 \times 10^{-3} + 3\text{mA}$
- .Ripple & noise: CV 1.5mVrms CC 3mArms
- .Display accuracy: $\pm (0.5\%R_{dg} + 2\text{digits})$
- .Input voltage: 110~127VAC $\pm 10\%$ 60Hz, 220~240 $\pm 10\%$ 50Hz Switchable

Model	Independent Output	Series Output	Parallel Output	Dimensions (W×H×D)	Weight (kg)
M10-QD3010	CH1 0~30V/0~10A CH2 0~30V/0~10A	CH1+CH2 0~60V/0~10A	CH1//CH2 0~30V/0~20A	255 × 155 × 480 mm	12
M10-QD3020	CH1 0~30V/0~20A CH2 0~30V/0~20A	CH1+CH2 0~60V/0~20A	CH1//CH2 0~30V/0~40A	255 × 155 × 480 mm	16
M10-QD6010	CH1 0~60V/0~10A CH2 0~60V/0~10A	CH1+CH2 0~120V/0~10A	CH1//CH2 0~60V/0~20A	255 × 155 × 480 mm	16

M30-SP & TP & YP SERIES



Features

.Output off function

- .Constant voltage and constant current
- .Aluminium alloy panel
- .Series and parallel tracking function (M30-TP Series)
- .One adjustable output & two fixed outputs (M30-YP Series)

Specifications

- .Line regulation: CV $1 \times 10^{-4} + 3\text{mV}$ CC $2 \times 10^{-3} + 3\text{mA}$
Fixed output 10mV (M30-TP Series)
Fixed output 1% (M30-YP Series)
- .Load regulation: CV $1 \times 10^{-4} + 4\text{mV}$ CC $2 \times 10^{-3} + 5\text{mA}$
Fixed output 10mV (M30-TP Series)
Fixed output 1% (M30-YP Series)
- .Ripple & noise: CV 1mVrms CC 3mA_{rms}
Fixed output 10mV (M30-TP & YP Series)
- .Fixed Output accuracy: 2.5% (M30-TP & YP Series)
- .Display accuracy: Voltmeter $\pm (0.2\% \text{Rdg} + 2\text{digits})$
Ammeter $\pm (1.0\% \text{Rdg} + 2\text{digits})$
- .Input voltage: 110~127VAC $\pm 10\%$ 60Hz, 220~240 $\pm 10\%$ 50Hz
Switchable



M30-SP305E



M30-YP305E



M30-TP305E

Model	Voltage	Current	Dimensions(W × H × D)	Weight
M30-SP202E	0~20V	0~2A	132 × 160 × 270mm	5kg
M30-SP303E	0~30V	0~3A	132 × 160 × 270mm	5kg
M30-SP305E	0~30V	0~5A	132 × 160 × 270mm	6kg

Model	Voltage	Current	Dimensions(W × H × D)	Weight
M30-TP202E	0~20V × 2 5V	0~2A × 2 3A	260 × 160 × 340mm	10kg
M30-TP303E	0~30V × 2 5V	0~3A × 2 3A	260 × 160 × 340mm	10kg
M30-TP305E	0~30V × 2 5V	0~5A × 2 3A	260 × 160 × 340mm	12kg

Model	Output 1	Output 2	Output 3	Dimensions(W × H × D)	Weight
M30-YP202E	0~20V 0~2A	12V 500mA	5V 500mA	170 × 160 × 250mm	6kg
M30-YP303E	0~30V 0~3A	12V 500mA	5V 500mA	170 × 160 × 250mm	6kg
M30-YP305E	0~30V 0~5A	12V 500mA	5V 500mA	170 × 160 × 250mm	7kg

M50 SERIES PROGRAMMABLE DC POWER SUPPLY

M50 SERIES PROGRAMMABLE DC POWER SUPPLY

M50 series are easy-use programmable linear DC power supply, upgrading from M10 and M30 series classical power supply.

The panel setting is same as most linear DC power supply, no any number key and no more function key. As well as having M10,M30 series features, they have timed outputs of voltage and current, a compact and clear user interface with PC and a standard USB, so the programming become a very simple work.

M50 series programmable DC power supply meet the requirements of various forms desktop and integrated system testing.

They are widely used in research and development, education, training, industrial control, mobile communication, and product testing, debug etc.

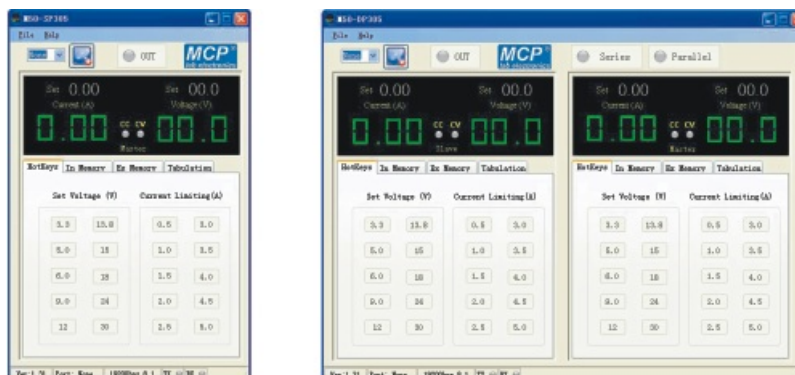


Advanced functions

Panel setting:



PC software interface:



M50-SP SINGLE PROGRAMMABLE DC POWER SUPPLY



Features

- .Single output
- .Output off function
- .LED digit display and setting
- .Standard interface USB
- .Constant voltage and constant current
- .Aluminium alloy panel



M50-SP305E

Specifications

- .Line regulation: CV $1 \times 10^{-4} + 3\text{mV}$ CC $2 \times 10^{-3} + 3\text{mA}$
- .Load regulation: CV $1 \times 10^{-4} + 4\text{mV}$ CC $2 \times 10^{-3} + 5\text{mA}$
- .Ripple & noise: CV 3mVrms CC 3mArms
- .Display accuracy: Voltmeter $\pm (0.2\% \text{Rdg} + 2 \text{digits})$
Ammeter $\pm (1.0\% \text{Rdg} + 2 \text{digits})$
- .Input voltage: 110~127VAC $\pm 10\%$ 60Hz, 220~240 $\pm 10\%$ 50Hz
Switchable

Model	Voltage	Current	Dimensions(W × H × D)	Weight
M50-SP202E	0~20V	0~2A	132×160×270mm	5kg
M50-SP303E	0~30V	0~3A	132×160×270mm	5kg
M50-SP305E	0~30V	0~5A	132×160×270mm	6kg



PC software control

M50-YP MULTI-OUTPUTS PROGRAMMABLE DC POWER SUPPLY



Features

- .One adjustable output and two fixed outputs
- .Output off function
- .LED digit display and setting
- .Standard interface USB
- .Constant voltage and constant current
- .Aluminium alloy panel



M50-YP305E

Specifications

- .Line regulation: CV $1 \times 10^{-4} + 3\text{mV}$ CC $2 \times 10^{-3} + 3\text{mA}$
Fixed output 1%
- .Load regulation: CV $1 \times 10^{-4} + 4\text{mV}$ CC $2 \times 10^{-3} + 5\text{mA}$
Fixed output 1%
- .Ripple & noise: CV 3mVrms CC 3mArms
Fixed output 10mV
- .Fixed output accuracy: 2.5%
- .Display accuracy: Voltmeter $\pm (0.2\% \text{Rdg} + 2\text{digits})$
Ammeter $\pm (1.0\% \text{Rdg} + 2\text{digits})$
- .Input voltage: 110~127VAC $\pm 10\%$ 60Hz, 220~240 $\pm 10\%$ 50Hz
Switchable

Model	Output 1	Output 2	Output 3	Dimensions(W × H × D)	Weight
M50-YP202E	0~20V 0~2A	12V 500mA	5V 500mA	170×160×250mm	6kg
M50-YP303E	0~30V 0~3A	12V 500mA	5V 500mA	170×160×250mm	6kg
M50-YP305E	0~30V 0~5A	12V 500mA	5V 500mA	170×160×250mm	7kg



PC software control

M50-TP TRIPLE-OUTPUTS PROGRAMMABLE DC POWER SUPPLY CE

Features

- .Two adjustable outputs and one fixed output
- .Output off function
- .LED digit display and setting
- .Standard interface USB
- .Constant voltage and constant current
- .Aluminium alloy panel



M50-TP305E

Specifications

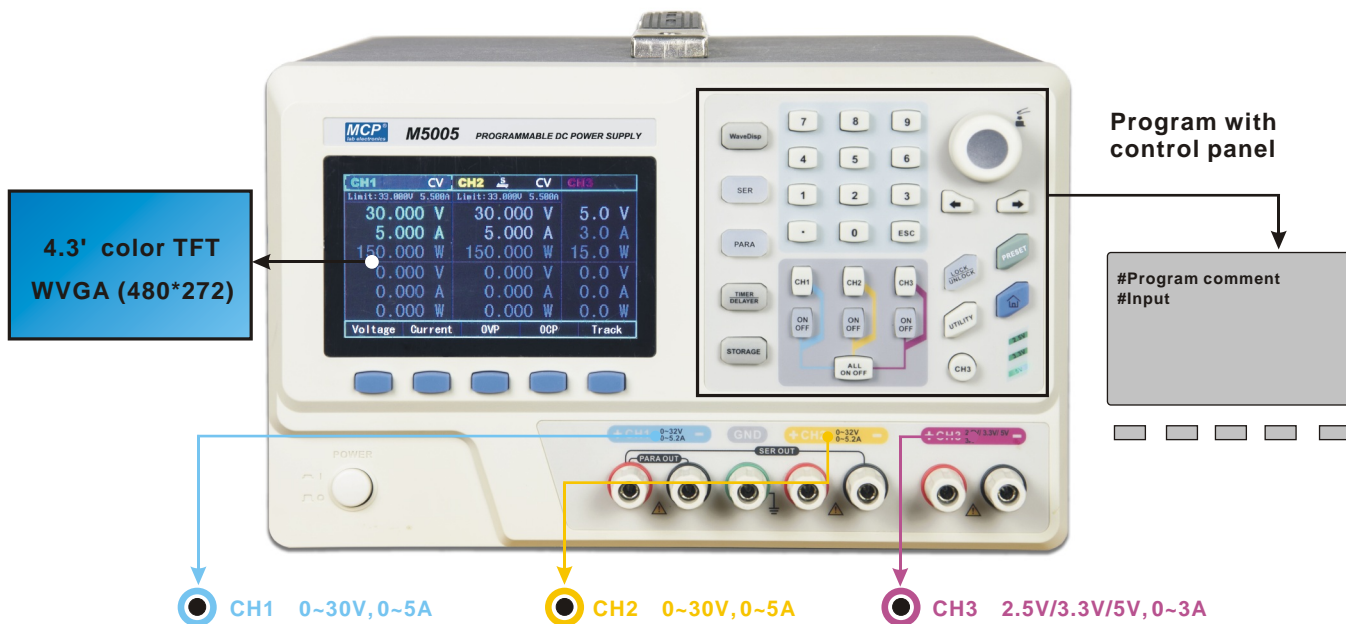
- .Line regulation: CV $1 \times 10^{-4} + 3\text{mV}$ CC $2 \times 10^{-3} + 3\text{mA}$
Fixed output 10mV
- .Load regulation: CV $1 \times 10^{-4} + 4\text{mV}$ CC $2 \times 10^{-3} + 5\text{mA}$
Fixed output 10mV
- .Ripple & noise: CV 3mVrms CC 3mArms
Fixed output 10mV
- .Fixed output accuracy: 2.5%
- .Display accuracy: Voltmeter $\pm (0.2\% \text{Rdg} + 2\text{digits})$
Ammeter $\pm (1.0\% \text{Rdg} + 2\text{digits})$
- .Input voltage: 110~127VAC $\pm 10\%$ 60Hz, 220~240 $\pm 10\%$ 50Hz
Switchable

Model	Voltage	Current	Dimensions(W × H × D)	Weight
M50-TP202E	0~20V×2 5V	0~2A×2 3A	260×160×340mm	10kg
M50-TP303E	0~30V×2 5V	0~3A×2 3A	260×160×340mm	10kg
M50-TP305E	0~30V×2 5V	0~5A×2 3A	260×160×340mm	12kg



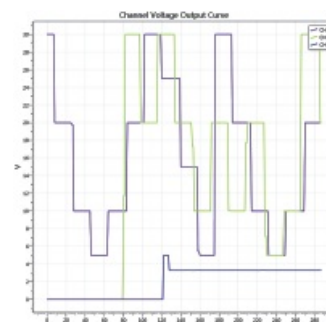
PC software control

M5000 SERIES PROGRAMMABLE DC POWER SUPPLY



CH1	CH2	CH3
30.000	30.000	5.000
5.000	5.000	3.000
150.000	150.000	15.000
0.000	0.000	0.000
0.000	0.000	0.000
0.000	0.000	0.000

MAIN CONTROL PANEL



OUTPUT CURVE RECORD

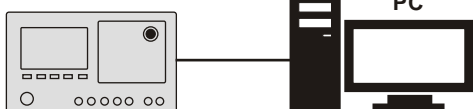
M5000 SERIES



LAN remote control

USB remote control

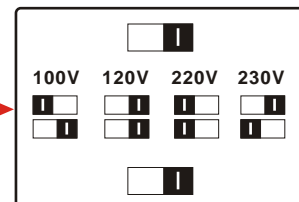
M5000 SERIES



BACK VIEW



AC SELECTOR FOR DIFFERENT COUNTRY



M5000 SERIES PROGRAMMABLE DC POWER SUPPLY

M5000 SERIES



NEW



M5005

Features

- . 4.3" TFT color display, WVGA (480*272)
- . Graphical user menu
- . Two independent channels 0~30V/0~3,0~5A
- . Fixed voltage output 2.5V,3.3V,5V/1A
- . High output resolution 1mV/1mA
- . Low ripple noise
- . Over voltage, over current and over heat protection

M5000 Series TechnicalData		M5003	M5005
Output	Voltage	CH1&CH2: 0~30V CH3: 2.5V/3.3V/5V	CH1&CH2: 0~30V CH3: 2.5V/3.3V/5V
	Current	CH1&CH2: 0~3A×2 CH3: 0~3A	CH1&CH2: 0~5A×2 CH3: 0~3A
CV mode	Regulation	source	≤0.01%+2mV
		load	≤0.01%+2mV
	Ripple & noise		≤1.0mVrms/350 μVrms (5Hz~1MHz)
	Response time		≤50 μs(50% load change & min.load 0.5A)
	Order processing time		<100ms
	Output range		0 to set voltage continuously adjustable
CC mode	Regulation	source	≤0.01%+250 μA
		load	≤0.01%+250 μA
	Ripple current		≤2mA _{rms}
	Output range		0 to set voltage continuously adjustable
Trace mode	Parallel	source regulation	≤0.01%+2mV
		load regulation	≤0.01%+2mV
	Series	source regulation	≤0.01%+3mV
		load regulation	≤300mV
Tracking error		≤0.5%+100mV(with load +300mV)	
Measurement	Display	voltage full range	5 digits
		current full range	4 digits
	Programming resolution	voltage	1mV
		current	1mA
	Read back resolution	voltage	0.1mV
		current	0.1mA
	Display resolution	voltage	1mV
		current	1mA
	Programming accuracy (25±5°C)	voltage	±(0.05%+10mV)
Reading accuracy (25±5°C)	current	±(0.2%+10mA)	
	voltage	±(0.05%+5mV)	
	current	±(0.15%+5mA)	
Voltage programming time	CH1	UP: FL<50ms,NL<30ms	DOWN: FL<45ms,NL<400ms
	CH2	UP: FL<50ms,NL<30ms	DOWN: FL<45ms,NL<400ms
	CH3	UP: FL<15ms,NL<13ms	DOWN: FL<20ms,NL<100ms
Temperature coefficient per°C	CH1	voltage full range	0.01%+5mV
		current full range	0.01%+2mA
	CH2	voltage	0.01%+5mV
		current	0.01%+2mA
	CH3	voltage	0.01%+2mV
		current	0.01%+2mA
Channel 3	output voltage		2.5V/3.3V/5V±8%
	output current		0~3A
	Regulation	source	≤0.01%+3mV
		load	≤0.01%+3mV
Ripple & noise		≤1.0mVrms (5Hz~1MHz)	
Interface			USB Host & Device
Power Source			AC 100V~240V, 50Hz /60Hz
Weight		8kg	9.5kg
Dimension (W×H×D)		260mm×270mm×300mm	

PROGRAMMABLE SWITCHING POWER SUPPLY

M10-NSS SERIES



M10-NSS3025

Features

.750W power output

- .Constant voltage and constant current
- .More units parallel operation
- .Remote programmable via USB to computer
- .10 programmable sets of voltage and current
- .Protection voltage and current settable.
- .Rotary encoder knob with definitive action of fine and coarse tuning
- .USB charger 5V/2A

Specifications

- | | | |
|-----------------------------------|--|--|
| .Line regulation: | CV $1 \times 10^{-4} + 2\text{mV}$ | CC $1 \times 10^{-4} + 1\text{mA}$ |
| .Load regulation : | CV $1 \times 10^{-4} + 4\text{mV}$ | CC $2 \times 10^{-3} + 3\text{mA}$ ($I < 10\text{A}$) |
| | CV $2 \times 10^{-4} + 4\text{mV}$ | CC $2 \times 10^{-3} + 3\text{mA}$ ($I \geq 10\text{A}$) |
| .Ripple & Noise (RMS): | CV 10mVrms | CC 10mArms |
| .Switching frequency: | 60kHz | |
| .Display accuracy: | Voltmeter $\pm(0.2\% \text{Rdg} + 2\text{digits})$
Ammeter $\pm(0.2\% \text{Rdg} + 5\text{digits})$ | |
| .Input voltage: | 110 \pm 20% VAC, 220 \pm 20% VAC, 50/60Hz Switchable | |
| .Full load input current: | 4.35 (at 220VAC input)/8.7 (at 110VAC input) | |
| .Efficiency: | 80% | |
| .Protections: | Over voltage, over current, over heat | |
| .Tracking over voltage protection | set voltage +1.5V | |
| .Tracking over current protection | set current +1.5A | |
| .USB output: | 5V/2A | |
| .Dimensions: | 100(W) \times 160(H) \times 320(D)mm | |
| .Weight: | 3kg | |

Model	Output Voltage	Output Current
M10-NSS3025	0~30V	0~25A
M10-NSS6012	0~60V	0~12.5A



PC software control

M10-MSS SERIES



Features

- . 450W power output
- . Constant voltage and constant current
- . Temperature control fan and over heat protection

Specifications

- .Line regulation: CV $6 \times 10^{-4} + 3\text{mV}$ CC $2 \times 10^{-3} + 3\text{mA}$
- .Load regulation: CV $2 \times 10^{-3} + 5\text{mV}$ CC $2 \times 10^{-3} + 5\text{mA}$
- .Ripple & noise: CV 15mVrms CC 15mArms
- .Display accuracy: Voltmeter $\pm (1.0\% \text{Rdg} + 2\text{digits})$
Ammeter $\pm (1.0\% \text{Rdg} + 2\text{digits})$
- .Input voltage: 110~127VAC $\pm 10\%$ 60Hz or 220~240 $\pm 10\%$ 50Hz



M10-MSS3015

Model	Voltage	Current	Resolution	Dimensions (W×H×D)	Weight (kg)
M10-MSS3015	0~30V	0~15A	100mV/100mA	105×160×215 mm	2.2
M10-MSS6008	0~60V	0~7.5A	100mV/10mA	105×160×215 mm	2.2
M10-MSS1005	0~100V	0~4.5A	1V/10mA	105×160×215 mm	2.2

M10-OSS 1540



Features

- .600W power output
- .Constant voltage and constant current
- .Temperature control fan and over heat protection



M10-OSS 1540

Specifications

- Output voltage: 0~15V
- Output current: 0~40A
- Line regulation: CV $2 \times 10^{-3} + 3\text{mV}$ CC $2 \times 10^{-3} + 3\text{mA}$
- Load regulation: CV $1 \times 10^{-3} + 5\text{mV}$ CC $2 \times 10^{-3} + 5\text{mA}$
- Ripple & noise: CV 30mVrms CC 30mArms
- Display accuracy: Voltmeter: $\pm (1.0\% \text{Rdg} + 2\text{digits})$ Ammeter: $\pm (1.0\% \text{Rdg} + 2\text{digits})$
- Input voltage: 110~127VAV $\pm 10\%$ 60Hz or 220~240VAC $\pm 10\%$ 50Hz
- Dimensions(W×H×D): 105×160×235mm
- Weight: 2.5kg

M10-ASS305



NEW

Features

- .Frequency switchable and voltage adjustable AC output
- .150W AC output
- .Light and compact

Specifications

- .Output Voltage: 0~30VAC RMS
- .Output Current: Max. 5A
- .Output Frequency: 50Hz, 60Hz (switchable or line tracing)
- .Output Accuracy: Frequency: 1%
- .Display Accuracy: Voltmeter $\pm(1\%Rdg+2digits)$
Ammeter $\pm(1\%Rdg+2digits)$
- .Input Voltage: 100~127VAC or 220~240VAC , 50Hz/60Hz
- .Dimensions: 105(W) \times 160(H) \times 215(D)mm
- .Weight: 2.2kg



M10-ASS305

M10-530 SERIES AC POWER SUPPLY



Features

- .Output separate, isolative safety
- .Output voltage continuously adjustable
- .High efficiency and convenient

Specifications

- .Input voltage: 220(230)VAC
- .Output voltage: 0~250VAC

Model	Max. Power	Max Current	Dimensions (W \times H \times D)	Weight kg
M10-530-5	500VA	2.5A	200 \times 120 \times 150mm	4
M10-530-10	1000VA	4.5A	200 \times 120 \times 150mm	5



M10-530-10

M10-540 SERIES AC POWER SUPPLY



Features

- .Output separate, isolative safety
- .High efficiency and convenient

Specifications

- .Input voltage: 230(220)VAC
- .Output voltage: 230(220)VAC

Model	Max. Power	Max Current	Dimensions (W \times H \times D)	Weight kg
M10-540-5	500VA	2.5A	160 \times 120 \times 200mm	6
M10-540-10	1000VA	4.5A	200 \times 120 \times 200mm	12



M10-540-5

M10-AC250-1 AC POWER SUPPLY



Features:

- .Digital display for output voltage and current
- .Output voltage continuously adjustable
- .Output separate, isolative safety
- .High efficiency and convenient



M10-AC250-1

Specifications

- | | |
|--------------------|--|
| .Input voltage: | 230(220)VAC |
| .Output voltage: | 0~260VAC |
| .Output current: | Max. 5A |
| .Output power: | Max. 1300VA |
| .Protection: | Over current |
| .Display accuracy: | Voltmeter $\pm(2.5\%Rdg+2digits)$
Ammeter $\pm(2.5\%Rdg+2digits)$ |
| .Dimension(W×H×D): | 260×160×340 mm |
| .Weight: | 17kg |

M10-AC250-2 AC POWER SUPPLY



Features:

- .Output separate, isolative safety
- .One way for output voltage continuously adjustable
- .One way for fixed output voltage (selectable)
- .High efficiency and convenient



M10-AC250-2

Specifications

- | | |
|--------------------|---------------|
| .Input voltage: | 230(220)VAC |
| .Output1 voltage: | 230VAC |
| .Output1 current: | Max. 4.35A |
| .Output1 power: | Max. 1000VA |
| .Output2 voltage: | 0~250VAC |
| .Output2 current: | Max. 4A |
| .Output2 power: | Max. 1000VA |
| .Protection: | Over current |
| .Dimension(W×H×D): | 260×160×340mm |
| .Weight: | 16kg |

M10-500 SERIES VARIAC

CE NEW



Optional digital meter

Features

- .Power cable plug or binding post for input.
- .4mm safety socket, outlet or binding post for output.
- .High efficiency and convenient use
- .Digital meter optional

Specification

M10-522-30

Model	Input Voltage	Output Voltage	Max. Power	Max Current	Dimensions (W × H × D)	Weight (kg)
M10-522-02	220(230)VAC	0~250VAC	200VA	1A	115×130×125mm	2.5
M10-522-05	220(230)VAC	0~250VAC	500VA	2A	125×145×160mm	4
M10-522-10	220(230)VAC	0~250VAC	1000VA	4A	185×160×210mm	6
M10-522-20	220(230)VAC	0~250VAC	2000VA	8A	185×190×210mm	8
M10-522-30	220(230)VAC	0~250VAC	3000VA	12A	200×210×250mm	11
M10-522-50	220(230)VAC	0~250VAC	5000VA	20A	235×250×290mm	17
M10-511-02	100(115)VAC	0~130VAC	200VA	2A	125×145×160mm	4
M10-511-05	100(115)VAC	0~130VAC	500VA	4A	185×160×210mm	6
M10-511-10	100(115)VAC	0~130VAC	1000VA	8A	185×190×210mm	8
M10-511-20	100(115)VAC	0~130VAC	2000VA	15.5A	200×210×250mm	11
M10-511-30	100(115)VAC	0~130VAC	3000VA	23A	235×250×290mm	17
M10-512-02	100(115)VAC	0~250VAC	200VA	2A	125×145×160mm	4
M10-512-05	100(115)VAC	0~250VAC	500VA	4A	185×160×210mm	6
M10-512-10	100(115)VAC	0~250VAC	1000VA	8A	185×190×210mm	8
M10-512-20	100(115)VAC	0~250VAC	2000VA	15.5A	200×210×250mm	11
M10-512-30	100(115)VAC	0~250VAC	3000VA	23A	235×250×290mm	17

Input and output mode

Model	Input	Output
M10-522-02	Power cable plug	4mm safety socket
M10-522-05	Power cable plug	4mm safety socket
M10-522-10	Power cable plug	4mm safety socket, outlet socket
M10-522-20	Power cable plug	4mm safety socket, outlet socket
M10-522-30	Power cable plug	4mm safety socket, outlet socket
M10-522-50	Binding post	Binding post
M10-511-02	Power cable plug	4mm safety socket
M10-511-05	Power cable plug	4mm safety socket, outlet socket
M10-511-10	Power cable plug	4mm safety socket, outlet socket
M10-511-20	Power cable plug	4mm safety socket, outlet socket
M10-511-30	Binding post	Binding post
M10-512-02	Power cable plug	4mm safety socket
M10-512-05	Power cable plug	4mm safety socket, outlet socket
M10-512-10	Power cable plug	4mm safety socket, outlet socket
M10-512-20	Power cable plug	4mm safety socket, outlet socket
M10-512-30	Binding post	Binding post

M10-3500 SERIES THREE PHASE VARIAC **NEW**

Features

- .Three phase input and output
- .High efficiency and convenient use
- .Digital meter optional



M10-3522-06

Model	Input Voltage	Output Voltage	Max. Power	Max Current	Dimensions (W × H × D)	Weight (kg)
M10-3522-03	220(380)VAC	0~250(430)VAC	3000(3X1000)VA	3X4A	230×182×430mm	19
M10-3522-06	220(380)VAC	0~250(430)VAC	6000(3X2000)VA	3X8A	230×182×550mm	26
M10-3522-09	220(380)VAC	0~250(430)VAC	9000(3X3000)VA	3X12A	260×210×550mm	33
M10-3522-15	220(380)VAC	0~250(430)VAC	15000(3X5000)VA	3X20A	390×355×605mm	70
M10-3522-20	220(380)VAC	0~250(430)VAC	20000(3X6600)VA	3X25A	390×355×605mm	90
M10-3522-30	220(380)VAC	0~250(430)VAC	30000(3X10000)VA	3X40A	410×450×900mm	150
M10-3511-03	100(175)VAC	0~130(225)VAC	3000(3X1000)VA	3X8A	230×182×550mm	26
M10-3511-06	100(175)VAC	0~130(225)VAC	6000(3X2000)VA	3X16A	260×210×550mm	33
M10-3511-09	100(175)VAC	0~130(225)VAC	9000(3X3000)VA	3X24A	280×245×720mm	50
M10-3511-15	100(175)VAC	0~130(225)VAC	15000(3X5000)VA	3X40A	390×355×605mm	90